

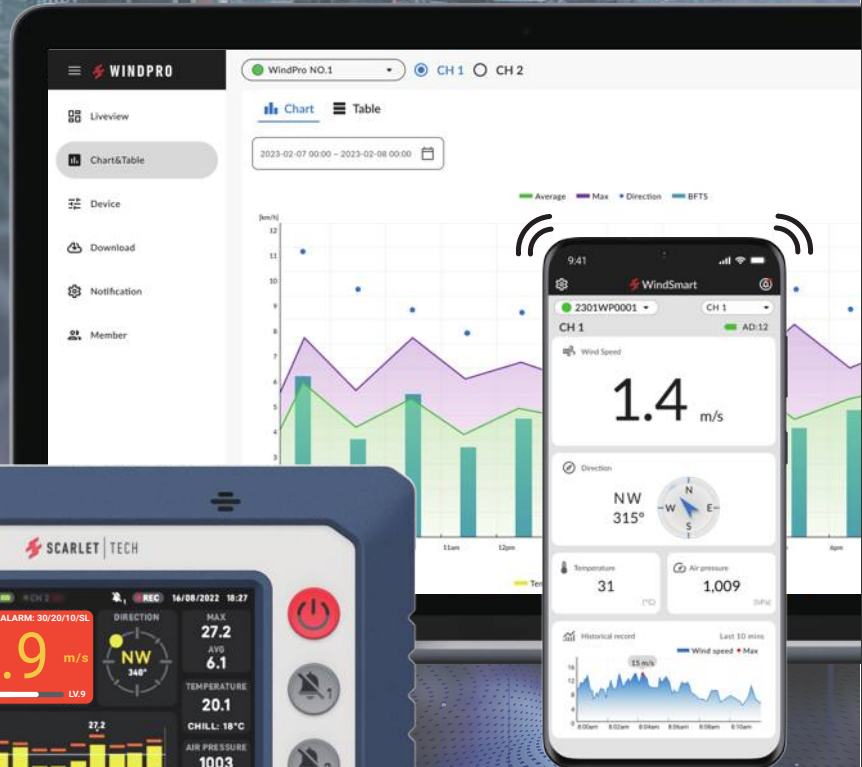
2023 ALL NEW

Web-Based Remote Wind Monitor

WindPro Online



SCARLET | TECH

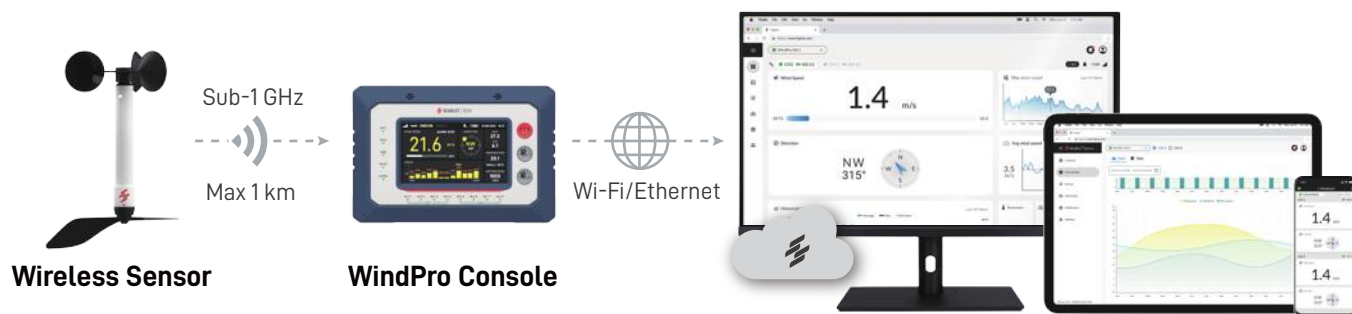


Unlimited Worldwide Monitoring

- Sites Specific Live Data
- Custom Email Notification
- Historical Chart & Graphic
- Unlimited Cloud Data Storage
- Remote Safety Wind Alert
- Compatible with All Smart Devices

Access Anytime, Anywhere

WindPro Online is the ultimate solution for accessing all your mission-critical data with ease and efficiency. The cutting-edge web-centric platform, WindPro Web Portal, is compatible with all smart devices, ensuring your team are able to access all essential site specific wind data from different locations on the go.



WindPro Wireless Anemometer

- Wind Speed (Live/Avg/Max), Wind Direction, Temperature, Air Pressure, Wind Chill
- IIoT Integration (Relay, 4-20mA, RS232, Bluetooth)
- Touch Console with 4 Alert Levels
- Support 2-Sensor Connectivity
- 128MB Data Logging Capacity

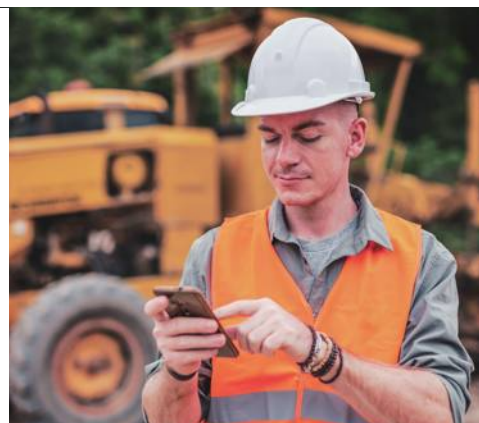
WindPro Web Portal

- ✓ Unlimited Data Storage
- ✓ Custom Email Notification
- ✓ Web Notification with Sound Alert
- ✓ Historical Chart & Graphic
- ✓ Access Multi-Sites Data Remotely
- ✓ All Smart Devices Compatible

Centralized Data Across Multi-Sites



Web Portal allows users to monitor wind data and inspect the hardware storage capacity, sensor battery power, and connection status of multiple WindPro devices. Ensure the entire deployment is performing as intended and simplify maintenance efforts across sites.



Custom Wind Alerts

Remote Safety Notification

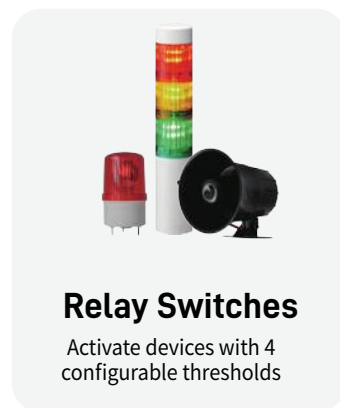
The highly configurable event notification function allow users setup multiple warning threshold by event severity. Notify multiple remote users in real-time through sound alert and pop-ups from browser & custom Emails.

- **Notification Type:** Browser pop-up with sound alarm, Email
- **Alarm Types:** Wind speed/ Wind direction
- **Configurable:** Alarm duration/ Response time/ Threshold invert
- **Email Recipients:** Maximum 3 accounts



Embedded Console Outputs for IIoT Integrations

WindPro Console is embed with versatile outputs to monitor and respond to wind conditions in diverse industrial settings. It offers configurable thresholds for alarm and automation controls, and delivers reliable readouts for industrial metrics and data acquisition.



Relay Switches

Activate devices with 4 configurable thresholds



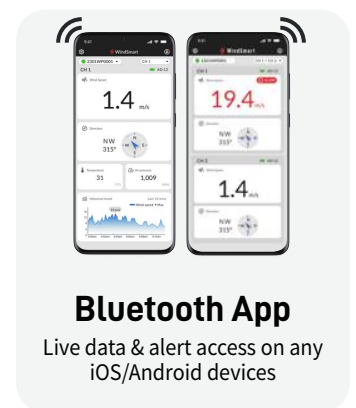
4-20mA Outputs

Industrial automation controls & data acquisition



RS232 Utility

Live readouts on PC-connected utility & outdoor signage



Bluetooth App

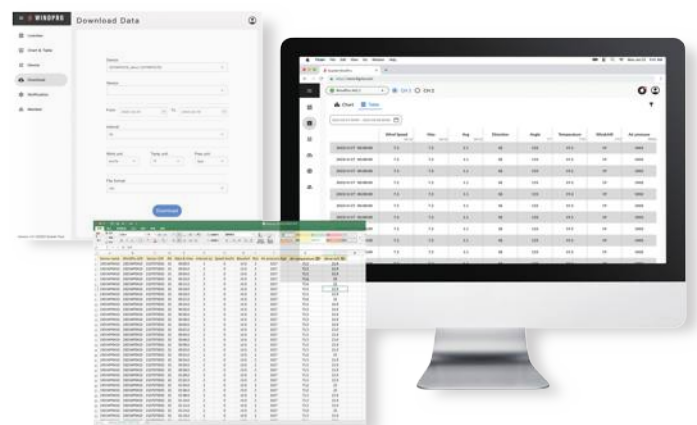
Live data & alert access on any iOS/Android devices

Data Recording

Unlimited Cloud Storage

Through WindPro Web Portal, users can access visual graphs of historical logs directly online. The raw data uploaded from consoles can be exported to the user's preferred format for further analysis.

- **Recording Parameters:** time stamp, wind speed, wind direction, air temperature, average wind speed, maximum wind speed, air pressure, Beaufort scale, and wind chill
- **Data Interval:** 2 s (raw data), 1m, 10m, 1h, 1d
- **Format:** .csv, .xlsx



Secure Hardware Data Backup

WindPro Control Console equipped with 128MB recording capacity for immediate data recovery to prevent internet disconnection or possible data loss.

- **Memory:** 128MB
- **Data Interval:** 2s (raw data)
- **Recording Parameters:** Timestamp, wind speed, wind direction, air temperature, air pressure



Hardware Technical Specifications

Wireless Wind Speed & Direction Sensor



Wind Speed Sensor

- **Range:** 0.3...50 m/s $\pm 2^{\circ}$
- **Accuracy:** $\pm 2\%$ full scale
- **Unit:** m/s, knots, MPH, km/hr, ft/s



Atmospheric Pressure

- **Range:** 500...1100 hPa
- **Accuracy:** ± 0.4 hPa
- **Unit:** hPa, Atm, mmHg, bar, Pa, inHg



Ambient Temperature Sensor

- **Range:** $-30^{\circ}\text{C} \dots 60^{\circ}\text{C}$
- **Accuracy:** $\pm 1^{\circ}\text{C}$
- **Unit:** $^{\circ}\text{C}$, $^{\circ}\text{F}$



Wind Direction Sensor

- **Range:** $0-359^{\circ}$ no blank sector
- **Accuracy:** $\pm 2^{\circ}$
- **Resolution :** 1°

WindPro Control Console



Data Collection

Wind speed (Live/Avg/Max), Wind direction, Ambient temperature, Wind chill, Beaufort scale, Air pressure



Alarm

- **Sound Alarm:** $> 110\text{dB}$
- **Alert Thresholds:** Wind speed x3, Wind direction x1 (per channel)



Outputs

Relays, 4-20mA, RS232, USB type C, RJ45, Bluetooth, Wi-Fi



Data Recording

- **Memory:** 128MB
- **Interval:** Every 2 seconds
- **Parameter:** Wind speed, wind direction, air temperature, air pressure
- **Format:** Excel



Software Support

- **Mobile App:** WindSmart Bluetooth APP
- **PC Utility:** WindPro RS232 Utility
ScarletWind Data Extraction Software



Wireless Range	Max 1,000 meters (Sub-1 GHz)
Data Rate	Every 2 seconds
Power Supply	Sensor: 3.6V 18505 Lithium battery x1 (up to 3 years) Console: AC 100-240V (Power adaptor)
Dimension & Weight	Sensor: 262.5 x 183.5 x 32mm, 406g Console: 185 x 126 x 65mm, 700g
Package Content	1-Year Unlimited Web Portal Access license, Wireless wind speed & direction sensor x1, WindPro console x1, Console power adapter x1, 3.6V sensor battery x1, Magnetic sensor mounting bracket x1, Receiver holder x1



Scarlet Tech Co., Ltd.
© 2023 Scarlet Tech Co., Ltd. All rights reserved.
4F-3, No. 347 , HePing E Rd, 2nd Sec, DaAn District, Taipei City 106, Taiwan
info@scarlet.com.tw
www.scarlet-tech.com

version 230505